

clever



19 Victoria Place

Stoke, Plymouth, PL2 1BY

Offers over £140,000



Welcome to this charming apartment located in the desirable Victoria Place, Stoke, Plymouth.

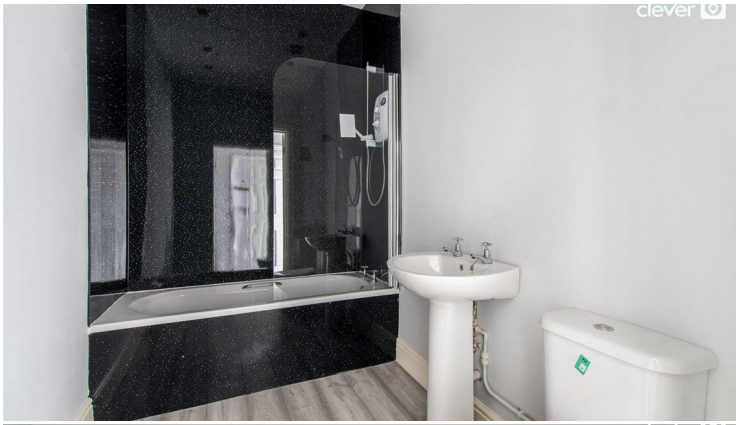
As you enter, you will be greeted by an entrance hallway with all rooms leading off, perfect for both relaxation and entertaining. The apartment boasts two well-appointed bedrooms, providing ample space for family or guests. With two bathrooms, including modern fixtures and finishes, convenience is at your fingertips.

One of the standout features of this property is the lovely views towards the River Tamar, which can be enjoyed from the kitchen within the apartment. The refurbishment has enhanced the overall appeal, showcasing lovely features that add character and charm to the home.

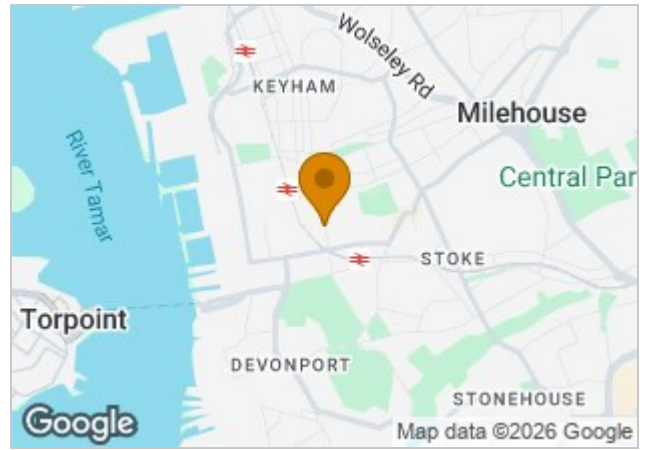
Additionally, the property includes parking for one vehicle, a valuable asset in this sought-after area. Whether you are a first-time buyer, a small family, or looking to downsize, this apartment offers a perfect blend of modern living and scenic surroundings.

Do not miss the opportunity to make this delightful apartment your new home. With its spacious layout, contemporary design, and stunning views, it is sure to impress.

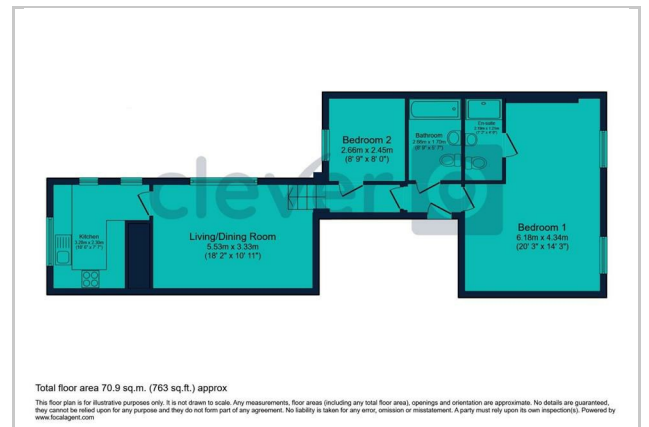




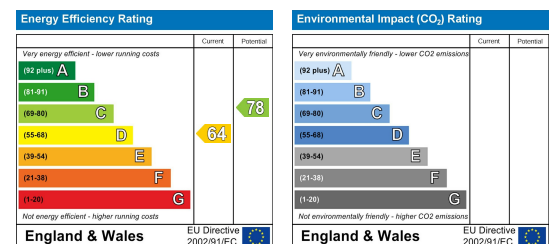
Area Map



Floor Plans



Energy Efficiency Graph



These particulars, whilst believed to be accurate are set out as a general outline only for guidance and do not constitute any part of an offer or contract. Intending purchasers should not rely on them as statements of representation of fact, but must satisfy themselves by inspection or otherwise as to their accuracy. No person in this firm's employment has the authority to make or give any representation or warranty in respect of the property.